





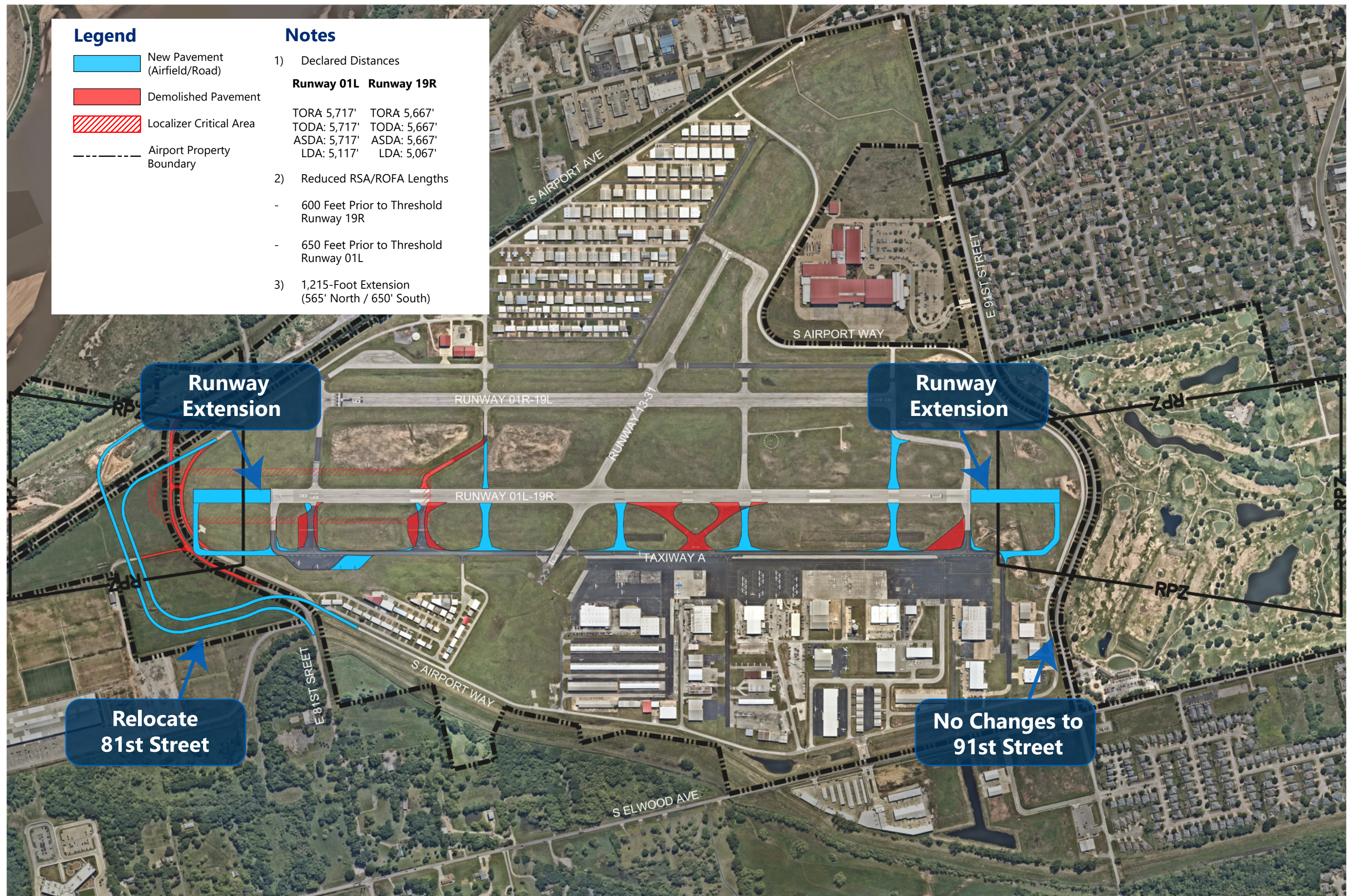
## Legend

-  New Pavement (Airfield/Road)
-  Demolished Pavement
-  Localizer Critical Area
-  Airport Property Boundary

## Notes

- 1) Declared Distances  
**Runway 01L Runway 19R**

TORA 5,717'	TORA 5,667'
TODA: 5,717'	TODA: 5,667'
ASDA: 5,717'	ASDA: 5,667'
LDA: 5,117'	LDA: 5,067'
- 2) Reduced RSA/ROFA Lengths
  - 600 Feet Prior to Threshold Runway 19R
  - 650 Feet Prior to Threshold Runway 01L
- 3) 1,215-Foot Extension (565' North / 650' South)







# Final Master Plan Public Meeting

**Thursday, March 30, 2023 from 5:30-7:30 p.m.**  
**Tulsa Tech Riverside Campus**  
**801 E. 91st St. Tulsa, OK 74132**

After collecting feedback from two public meetings, Tulsa Riverside Airport has prepared an updated long-range development plan as a final step for the RVS Master Plan Project. Airport officials invite you to the third and final public meeting to learn more about the Development Plan, which will serve as a 20-30 year roadmap of improvements for RVS.

This public meeting will be an open-house style event with informational boards displayed that show plan details. Attendees are welcome to come anytime between 5:30-7:30 p.m. on Thursday, March 30, 2023. Airport staff will be onsite to answer any questions guests may have.

**We encourage you to email our team at [rvmasterplan@tulsaairports.com](mailto:rvmasterplan@tulsaairports.com) if you have any questions or feedback.**

